

DINGS'

Precision Motion Specialist

CORELESS PUSH ROD ACTUATOR

Jiangsu DINGS' Intelligent Control Technology Co., Ltd.





Founded in 2008, Jiangsu DINGS' Intelligent Control Technology Co., Ltd. is guided by the philosophy, **"Quality stems from responsibility, and details determine success."**

As a global leader in precision linear motion, DINGS' delivers a comprehensive portfolio of precision stepper, DC and BLDC motors, voice coil motors, lead and ball screw linear actuators, PMSM motors for eco-mobility, and advanced motion controllers — setting new benchmarks in the global motion control market.

SCALE

200+ Advanced Machining Equipment



20+ Automated Assembly Lines



100+ Precision Testing & Analysis Systems



140+ Patents & Intellectual Properties



GROWTH

2008 Company Founded & DINGS' Brand Established

2010 DINGS' Motion USA Established

2016 DINGS' Korea Established

2019 Joined LEILI Group

2021 Changzhou Intelligent Manufacturing Plant Established
Listed on China NEEQ Market

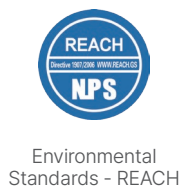
2022 Korea R&D Center Established

Listed on Beijing Stock Exchange [Stock Code: 920593]
2023 DINGS' Korea Converted to Corporate Entity
DINGS' Japan Established

2024 New Headquarters & Plant Established
DINGS' Motion Europe Established

2025 Thailand Manufacturing Facility Established

CERTIFICATIONS



PRODUCT WARRANTY

Warranty period: 1 year from shipment.

Free repair is provided for defects in materials or workmanship under normal use.

Warranty does not apply to:

- Warranty expiration or damaged/lost nameplates
- Improper installation or operating conditions
- Unauthorized disassembly or modification
- Repairs conducted outside of official service channels
- Force majeure, including natural disasters

DINGS' is committed to quality, reliability, and responsibility

— delivering high-performance motion solutions built on precision engineering.

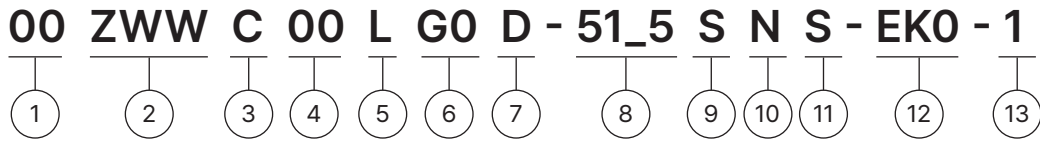
Content

CORELESS PUSH ROD ACTUATOR

Part number construction	4
10 mm	5
12 mm	6
16 mm	7
22 mm	8



Part Number Construction



① Motor Size

Motor Size (mm)	10	12	16	22
-----------------	----	----	----	----

② Product Name

ZWW = Coreless Brushless DC Motor

③ Motor Shape

C = Circular Type

④ Motor Length

Uni : mm

When the length involves decimal points, use "_" instead

⑤ Motor Casing

L = Aluminum

T = Stainless steel / Iron

⑥ Gear Ratio

00 = Gear Ratio

⑦ Lead Screw Code

Please refer to lead screw code selection table

⑧ Effective Stroke Length

⑨ Screw Surface Treatment

S = Standard (No teflon coating)

⑩ End Machining

C = Customize

N = None

⑪ Nut Style

S = Standard flange nut

⑫ Encoder

0 = Resolution

⑬ Customer Serial Number

Example

Part Number 10ZWWC25L-G18AB-16SNS-EK1024-001

Description Motor diameter 10 mm
 Coreless Brushless DC Motor
 Motor length 25 mm
 Stainless steel housing
 Gear ratio 1:18
 AB lead
 Effective stroke 16 mm
 Customization: None
 Encoder resolution: 1024
 Custom serial number: 001

10mm Series

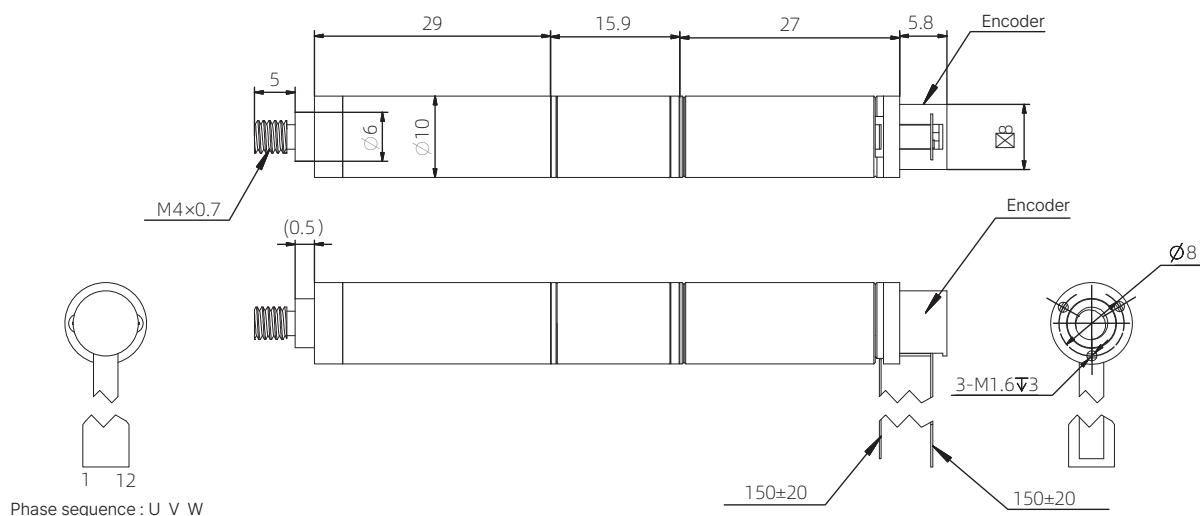


Motor Characteristics

Motor part number		10ZWWC25L
Motor size	mm	10
Rated voltage	V	12
Rated current	A	0.8
Lead screw pitch	mm	1
Standard stroke (customizable)	mm	15
Maximum stroke	mm	25
Maximum speed	mm/s	28
Rated thrust	N	80
Peak thrust (short-time)	N	160
Gear ratio	-	18
Weight	g	31.9
Overall dimensions	mm	Φ10 × 83.2
Operating temperature	°C	-20 ~ +50
Repeatability	mm	±0.08
Encoder type	-	Incremental magnetic encoder
Number of channels	-	3
Encoder supply voltage	V	3.3
Resolution	-	1024

The above data is based on a gear ratio of 18:1

Dimensional Drawings



12mm Series

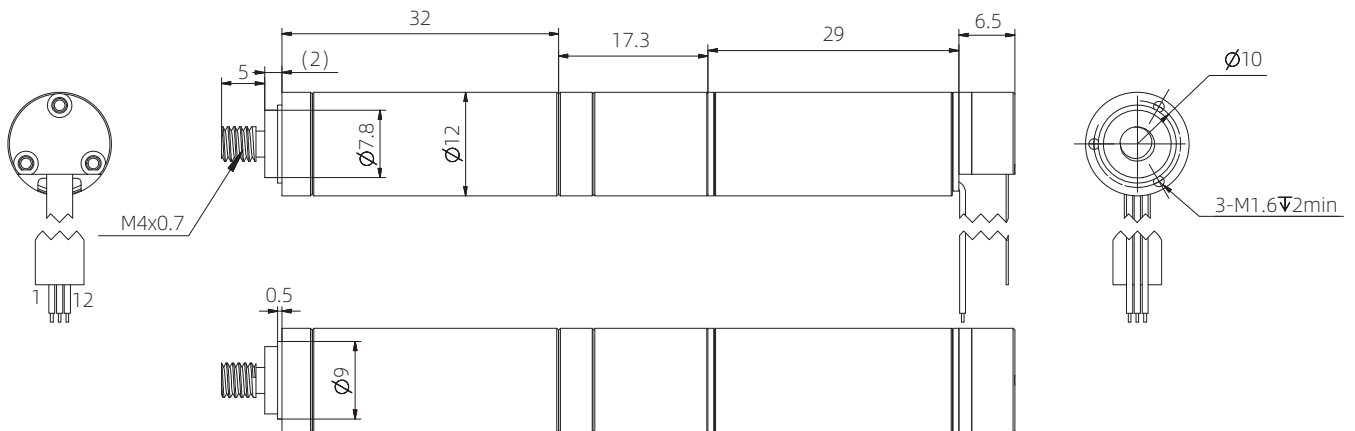


Motor Characteristics

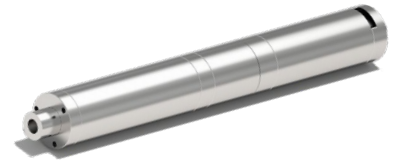
Motor part number		12ZWWC29L
Motor size	mm	12
Rated voltage	V	12
Rated current	A	0.65
Lead screw pitch	mm	1.27
Standard stroke (customizable)	mm	20
Maximum stroke	mm	30
Maximum speed	mm/s	14
Rated thrust	N	85
Peak thrust (short-time)	N	170
Gear ratio	-	18
Weight	g	51.3
Overall dimensions	mm	Φ12 × 91.8
Operating temperature	°C	-20 ~ +50
Repeatability	mm	±0.08
Encoder type	-	Incremental magnetic encoder
Number of channels	-	3
Encoder supply voltage	V	3.3
Resolution	-	1024

The above data is based on a gear ratio of 18:1

Dimensional Drawings



16mm Series

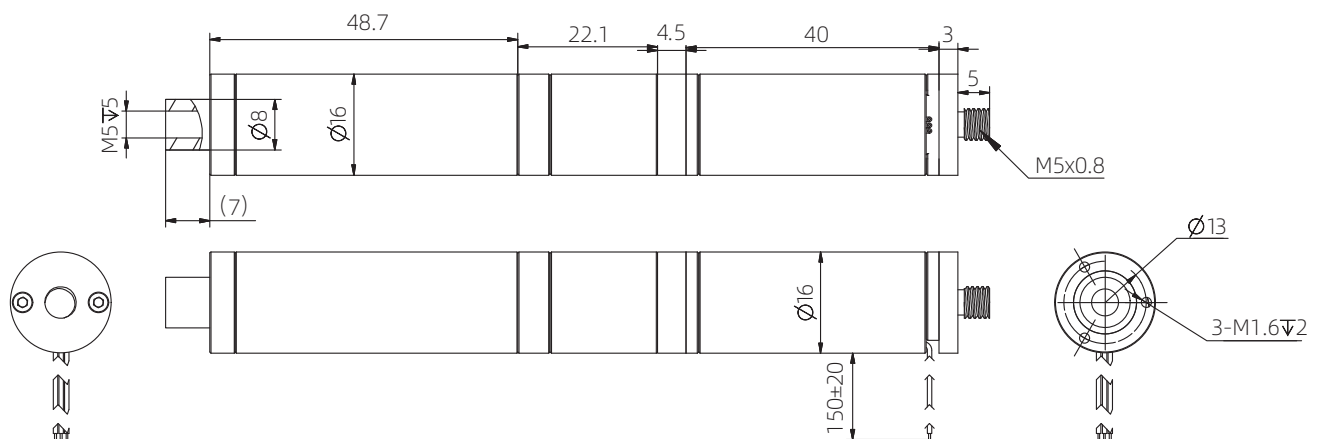


Motor Characteristics

Motor part number		16ZWWC40L
Motor size	mm	16
Rated voltage	V	12
Rated current	A	2.6
Lead screw pitch	mm	1.27
Standard stroke (customizable)	mm	30
Maximum stroke	mm	40
Maximum speed	mm/s	20
Rated thrust	N	200
Peak thrust (short-time)	N	400
Gear ratio	-	28
Weight	g	131.4
Overall dimensions	mm	Φ16 × 131.3
Operating temperature	°C	-20 ~ +50
Repeatability	mm	±0.08
Encoder type	-	Incremental magnetic encoder
Number of channels	-	3
Encoder supply voltage	V	5
Resolution	-	1024

The above data is based on a gear ratio of 18:1

Dimensional Drawings



22mm Series

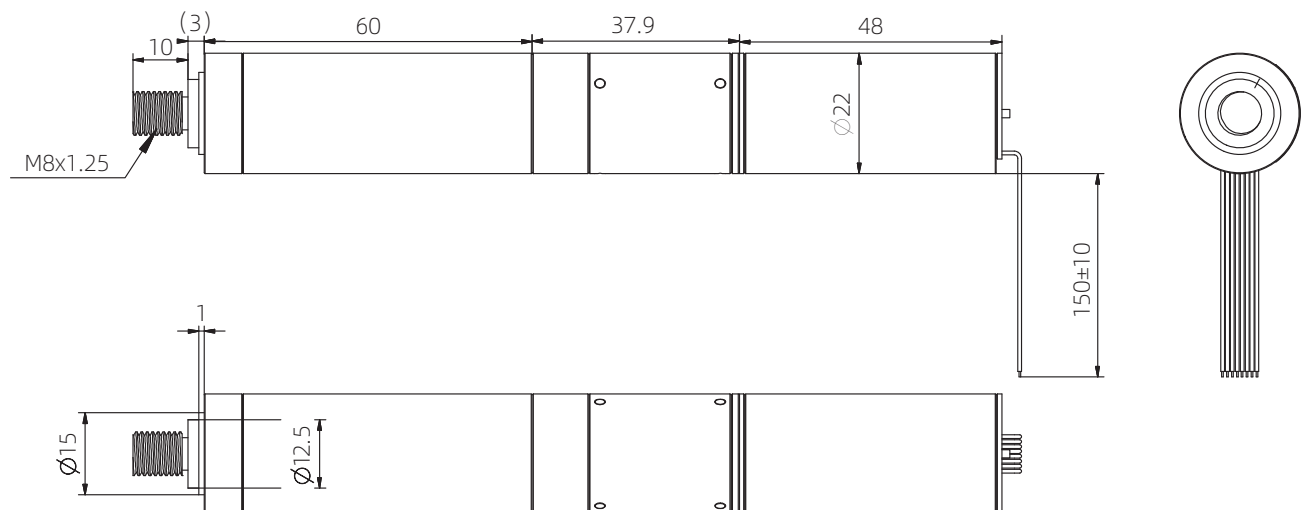


Motor Characteristics

Motor part number		22ZWWC48L
Motor size	mm	22
Rated voltage	V	24
Rated current	A	1.1
Lead screw pitch	mm	1
Standard stroke (customizable)	mm	40
Maximum stroke	mm	50
Maximum speed	mm/s	5
Rated thrust	N	750
Peak thrust (short-time)	N	1500
Gear ratio	-	26
Weight	g	318
Overall dimensions	mm	$\Phi 22 \times 168.9$
Operating temperature	$^{\circ}\text{C}$	$-20 \sim +50$
Repeatability	mm	± 0.08
Encoder type	-	Incremental magnetic encoder
Number of channels	-	3
Encoder supply voltage	V	5
Resolution	-	1024

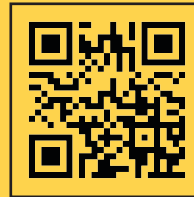
The above data is based on a gear ratio of 18:1

Dimensional Drawings

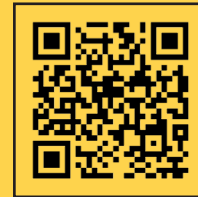




ENG Web



Partners Web



YouTube



HEADQUARTERS

Jiangsu DINGS' Intelligent Control Technology Co., Ltd.

No. 2850 Luheng Road, Changzhou Economic Development Zone, Jiangsu Province, China

Tel : +86-519-85177826

Fax : +86-519-85177807

E-mail : info@dingsmotion.com

www.dingsmotion.com

GLOBAL MANUFACTURING LOCATION

DINGS' Intelligent Control Technology (Thailand) Co., Ltd.

42/29 Moo 4, Uthai Subdistrict, Uthai District, Phra Nakhon Si Ayutthaya 13210, Thailand

Tel : +66 64-505-9951

SUBSIDIARIES

DINGS' Motion USA

355 Cochrane Circle Morgan Hill,
CA 95037

+1-408-612-4970

sales@dingsmotionusa.com

dingsmotionusa.com

DINGS' Motion Europe

4 Avenue du Grand Trémoutier
44120 Vertou, France

+33-(0)6-41-37-80-07

sebastien@dingsmotion.com

fr.dingsmotion.com

DINGS' Korea Co., Ltd.

C-702, 158 Haneulmaeul-ro, Ilsandong-gu,
Goyang-si, Republic of Korea

+82-31-994-0755

daniel@dingsmotion.com

dingsmotion.kr / dkps.co.kr / en.dkps.co.kr

INTERNATIONAL OFFICES

DINGS' Shenzhen Office

Room 1105, Block C, CIMC Industry Park,
Guangming District, Shenzhen, China

info@dingsmotion.com

DINGS' JAPAN

101, 2-27-18, Nishi-kojiya, Ota-ku, Tokyo
144-0034 JAPAN

+81-90-7730-0034

tsukahara@dingsmotion.com

jp.dingsmotion.com

© DINGS'. All rights reserved

No part of this catalog may be reproduced or distributed without prior written consent from DINGS'. Specifications, features, and designs are subject to change without prior notice for product improvement.

DINGS' reserves the right of final interpretation of this catalog and its products.